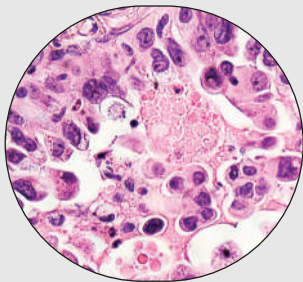
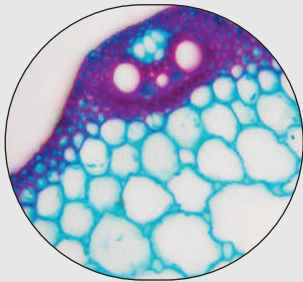


TRINOCULAR TISSUE CULTURE MICROSCOPE

METZ – 6000 TTCM (STAR)



SPECIFICATIONS

Trinocular Observation	Siedentopf Observation head inclined at 45°. Diopter adjustment ring on ocular tube. Inter-pupillary distance from 48mm to 75mm.
Eye Piece	Eyepieces EWF 10x (Paired) FOV 18mm.
Objectives	LWD Plan 4x, LWD Plan phase 10x, 20x PH, LWD Plan 40x
Mechanical Body	Quadruple nosepiece. Pre-Focussing Lever & Tension Adjustment Ring Are On Focusing Mechanism. Hard coated mechanical stage is 180mm x 165mm. Movement 50mmX40mm
Illuminator	12V/20W Halogen lamp with spherical collector lens, continuous regulation of the illumination.
Condenser	Long working distance 45mm. Condenser with N.A. 0.35. Field diaphragm, Pull out filter socket.
Filter	Blue, Green, Yellow Glass Filter.
Standard Accessories	Electric Cable, Fuse, Vinyl dust cover, Operating Manual, 12V/20W Halogen bulb, Styro Foam molded pack.